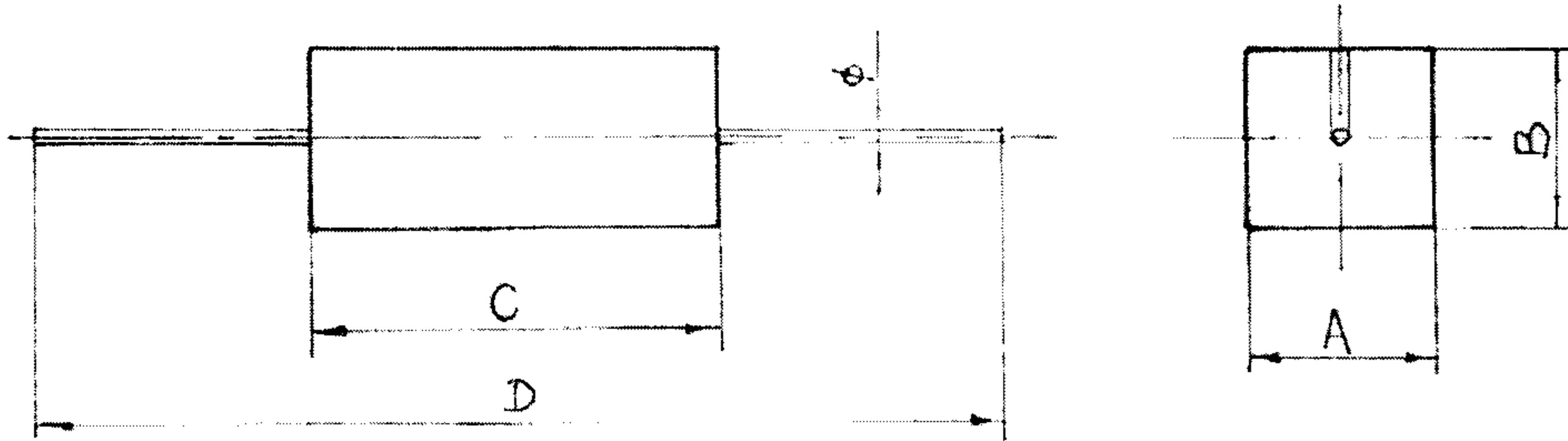


# 电阻器标准规格书

## THE STANDARD STYLE BOOK OF CEMENT RESISTOR

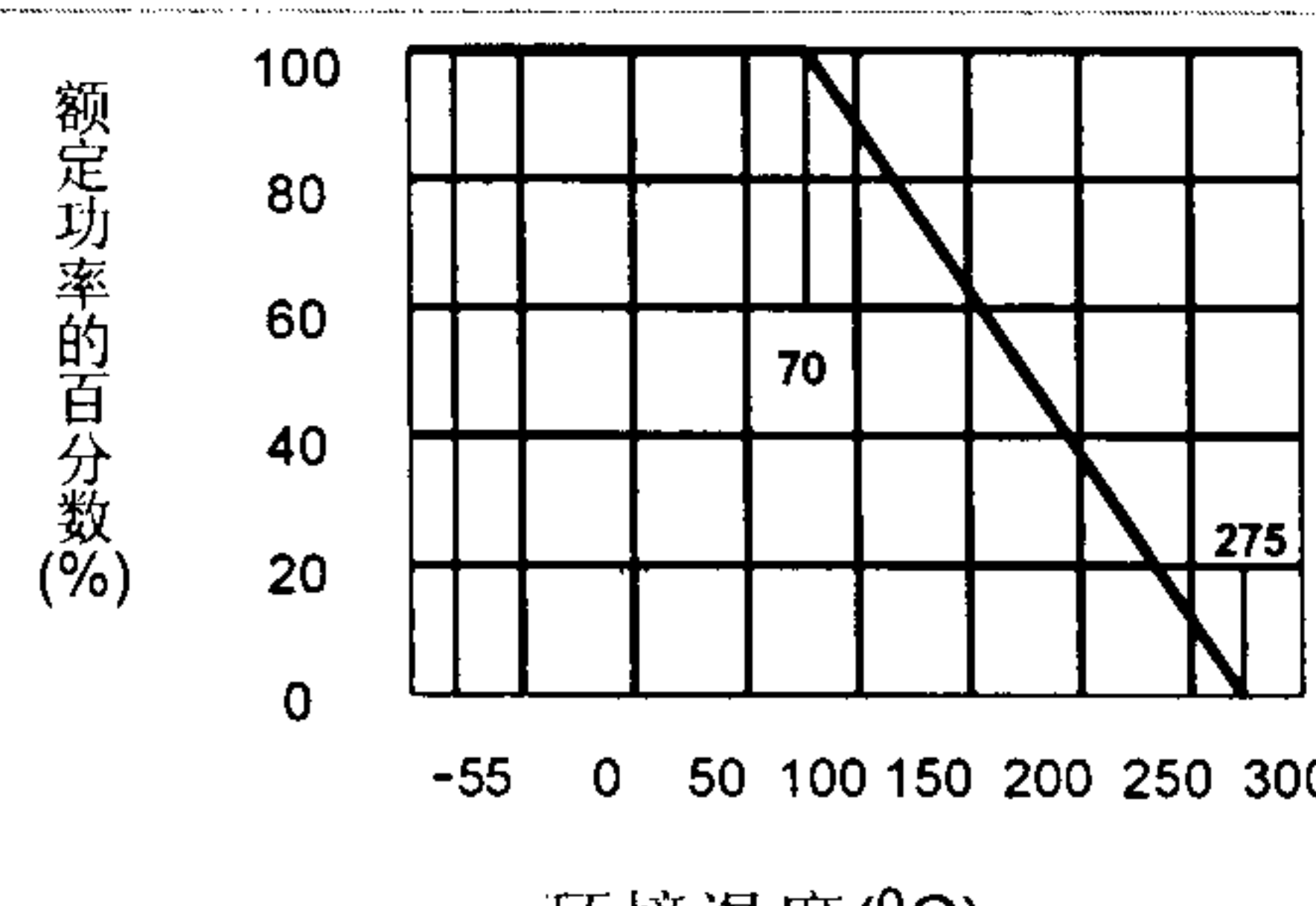
### (MODEL RX27-1- 10W-10R-J)



#### 1 外形尺寸 (Dimension):

尺寸 Dimension (mm)	A	B	C	D	Φd
数值 Value	9.5±1	9.5±1	48±1	95±2	0.76±0.05

#### 2 额定值 (Rated Value):

型号 (Style)	RX27-1
额定功率 (Rated Power)	10 W
降功耗曲线 (Derating Curve)	 <p>额定功率的百分数 (%)</p> <p>环境温度(°C)</p>
额定电压 Rated Voltage	$\sqrt{\text{额定功率(W)} \times \text{标称阻值}(\Omega)}$ Vdc
元件极限电压 Maximum Voltage	350V
最高过载电压 Maximum Overload Voltage	700V
允许偏差 Tolerance	J(±5%)
阻值范围 Resistance Range	10R
使用温度范围 Operating Temperature Range	-55°C ~ +155°C